

2025-2026 Woodcreek Symphony Orchestra Audition

In addition to the excerpt played, all participants must submit two two- or three-octave scales, each with two or more sharps or flats. The recording must be emailed to submissions@woodcreeksymphony.org by the published due date. Before playing each scale, please state its name and tempo. Additionally, please state the tempo of the excerpt. Play the scales as close to 80 BPM as possible, and play the excerpts as close to the marked tempo as well.

Checklist

- Played 2 2- or 3-octave scales with 2 or more sharps or flats at or near 80 BPM
- Played the excerpt for your instrument at the marked tempo.
- Stated out loud, your name, instrument, and tempo for both the scales and excerpt
- Emailed the recording to submissions@woodcreeksymphony.org

Violin

Choose the second excerpt if you cannot comfortably play this within the time period provided. You must play excerpt No. 1 to be considered for a principal chair.

Monti - Csárdás: m22-53, tempo is as fast as you can CLEANLY play it. 16th notes can (probably should) be played on the string. No repeats.

Allegro vivo

22 *p* 23 24 25 26 27

28 *f* 29 30 *p* 31 32

Violin I 3

33 34 35 *cresc. molto* 36 *f* 37

38 39 40 41 42

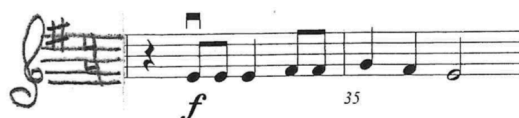
43 44 45 46 *pp* 47

48 49 50 51 52 53

Violin Excerpt No. 2

This is a simpler excerpt, if you chose to play this make sure you take note of all of the markings, including but not limited to bow direction and dynamics.

$\text{♩} = 90-120$



Viola

Choose the second excerpt if you cannot comfortably play this within the time period provided. You must play excerpt No. 1 to be considered for a principal chair.

Bloch - Concerto Grosso for Strings and Piano Obligato: Mvt. 4 Beg-Circle 40 first note (G natural)

♩=120

4. FUGUE

Allegro
f marcato

38 *cresc.* *f*

39

40 *mf* *mf*

Viola excerpt No. 2

This is a simpler excerpt, if you chose to play this make sure you take note of all of the markings, including but not limited to bow direction and dynamics.

$\text{♩} = 90-120$



Cello

Choose the second excerpt if you cannot comfortably play this within the time period provided. You must play excerpt No. 1 to be considered for a principal chair.

Tchaikovsky *Symphony No. 6, Mvt. 2* ♩=144

II

Allegro con grazia

6 *mf* *mf* *f*

9 *mf* *ff* *gliss.*

13 *sempre mf* *1.*

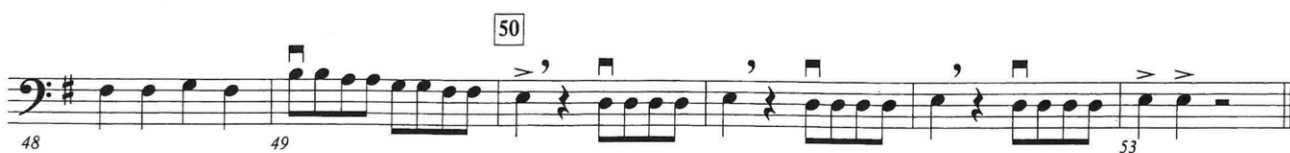
16 *mf* *pù f* *2.*

21 *mf* *f*

Cello excerpt No. 2

This is a simpler excerpt, if you chose to play this make sure you take note of all of the markings, including but not limited to bow direction and dynamics.

$\text{♩} = 90-120$



Bass

Choose the second excerpt if you cannot comfortably play this within the time period provided. You must play excerpt No. 1 to be considered for a principal chair.

Haydn - *Symphony No. 31, Mvnt. 4, Var. VII*, no repeats

$\text{♩} = 90$

Variation 7
Moderato

Handwritten fingering and bowing marks are present above the notes. Red brackets indicate the start and end of the excerpt. The excerpt spans measures 1 to 14.

Bass excerpt No. 2

This is a simpler excerpt, if you choose to play this make sure you take note of all of the markings, including but not limited to bow direction and dynamics.

$\text{♩} = 90-120$

A musical staff in treble clef with a key signature of one sharp (F#). It contains two measures of music. Measure 35 starts with a half note F#4, followed by a quarter note G#4, and a quarter note A4. Measure 36 starts with a half note B4, followed by a quarter note C5, and a quarter note D5.

A musical staff in bass clef with a key signature of one sharp (F#). It contains six measures of music. Measure 37: quarter notes F#2, G#2, A2. Measure 38: quarter notes B2, C3, D3. Measure 39: quarter notes E3, F#3, G#3. Measure 40: quarter notes A3, B3, C4. Measure 41: quarter notes D4, E4, F#4. Measure 42: quarter notes G#4, A4, B4.

A musical staff in bass clef with a key signature of one sharp (F#). It contains six measures of music. Measure 43: quarter notes F#2, G#2, A2. Measure 44: quarter notes B2, C3, D3. Measure 45: quarter notes E3, F#3, G#3. Measure 46: quarter notes A3, B3, C4. Measure 47: quarter notes D4, E4, F#4. Measure 48: quarter notes G#4, A4, B4.

A musical staff in bass clef with a key signature of one sharp (F#). It contains five measures of music. Measure 49: quarter notes F#2, G#2, A2. Measure 50: quarter note B2, quarter rest, quarter note C3. Measure 51: quarter note D3, quarter rest, quarter note E3. Measure 52: quarter note F#3, quarter rest, quarter note G#3. Measure 53: quarter note A3, quarter rest, quarter note B4. The staff ends with a double bar line.

Piano

Bloch - *Concerto Grosso for Strings and Piano Obligato*, Mvt. 4 Pickup to Circle 40 to first chord of Circle 43 ♩=116

Handwritten annotation: *Solo.* above measure 40.
Handwritten annotation: *ff marcato* below measure 40.
Measure 40: Treble clef, key of B-flat major, 4/4 time. The melody features a series of eighth notes with accents. The bass line consists of a steady eighth-note accompaniment.
Measure 41: Continuation of the eighth-note accompaniment in the bass line. The treble clef part continues with accented eighth notes.

Measure 41: Treble clef part ends with a half note chord. Bass line continues with eighth notes.
Measure 42: Treble clef part begins with a half note chord. Bass line continues with eighth notes. Handwritten annotation: *p* below the first half note in the treble.
Measure 43: Treble clef part begins with a half note chord. Bass line continues with eighth notes. Handwritten annotation: *dim.* below the first half note in the treble.

Measure 42: Treble clef part begins with a half note chord. Bass line continues with eighth notes. Handwritten annotation: *pp* below the first half note in the treble.
Measure 43: Treble clef part begins with a half note chord. Bass line continues with eighth notes. Handwritten annotations: *ma marcato* and *cresc. poco a poco* below the first half note in the treble.

Measure 43: Treble clef part begins with a half note chord. Bass line continues with eighth notes. Handwritten annotation: *f* below the first half note in the treble.
Measure 44: Treble clef part begins with a half note chord. Bass line continues with eighth notes. Handwritten annotation: *allargando* below the first half note in the treble.
Measure 45: Treble clef part begins with a half note chord. Bass line continues with eighth notes. Handwritten annotation: *a tempo* below the first half note in the treble.
Measure 46: Treble clef part begins with a half note chord. Bass line continues with eighth notes. Handwritten annotation: *mf* below the first half note in the treble.



Harp

Stravinsky - *Firebird Suite*, Berceuse

#3 $\text{♩} = 60$ Firebird Suite - Stravinsky
Berceuse

gliss. p 2 $sim.$ $rit.$ 6 $a\ tempo$ 1-8 2 3 7 8 $laissez\ vibrer$